

Indications for use:

- construction of crown and bridge temporaries
- short- and long-term temporaries

Technical data:

- **Mixed volume:** 50 ml (cartridges)
- **Mixing ratio:** 10:1
- **Product colours:** A1 / A2 / A3 / A3.5 (as indicated on package)
- **Dosage and application time:** approx. 45 sec.*
- **Setting time in the mouth:** approx. 40 sec (hard-elastic phase, from beginning of mixing)
- **Setting time:** approx. 6 - 7 min.* (until setting is completed)
- **Application:** At 23 °C ± 2 °C / 73 °F ± 3.6 °F
- **Storage:**



* At 23 °C. Increased temperatures accelerate, decreased temperatures prolong these times.

Physical properties:

- **Compressive strength:** > 250 MPa
- **Flexural strength:** > 80 MPa
- **Diametral tensile strength:** > 40 MPa
- **Barcol hardness:** > 37
- **Water uptake:** 0.9% (w/w)
- **Maximal temperature reached during setting:** < 40 °C / 104 °F

Ordering information:

Ref No :
9007

Available-in
50ml Cartridge,
10 Mixing Tips

AccuTemp

Composite for temporary crown & bridge, self curing, colour stable

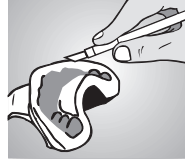


Fig. 1

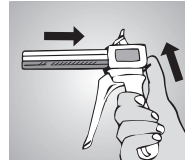


Fig. 2

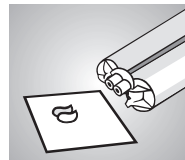


Fig. 3

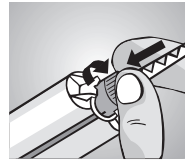


Fig. 4

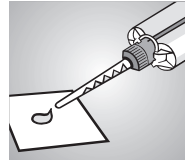


Fig. 5



Fig. 6

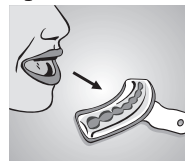


Fig. 7

1. Preparation of the impression

Before any preparation is done (stump or bridge preparation, tooth extraction), take a situation impression using alginate or silicone. Interdental ridges should be excised to increase the amount of material later available for finishing (Fig. 1). If there is a gap between molars, a connecting bar between prepared teeth is created by cutting a groove between the abutment teeth in the impression. Alginate impressions should be kept at 100% rel. humidity until filling with **AccuTemp**.

2. Use of the dispensing gun

Cartridge material is extruded using the Automix2System dispensing gun (Fig. 2). After inserting cartridge into dispensing gun, unscrew cap and carefully extrude a small amount of material to insure proper flow from both ducts (Fig. 3). Attach mixing cannula by aligning notched side to cartridge and turning clockwise until fastened (Fig. 4). Dispenser now ready to mix silicone in any amount needed. Leave mixing cannula on cartridge after use. Use only blue **AccuTemp**10:1 blue mixing cannulas!

3. Mixing and application

AccuTemp base material and catalyst are automatically mixed in the correct proportion when extruding by dispensing gun. Before beginning work with the Automix2 dispensing gun, always extrude a small (pea-sized) amount and discard (Fig. 5). Apply **AccuTemp** to deepest parts of impression first and evenly fill impression up to gingival level (Fig. 6).

4. Intraoral modelling of the temporary

Seat filled impression onto prepared teeth and remove any excess material with a plastic tool. **AccuTemp** will attain a hard-elastic consistency after 2 - 3 min. after extrusion, at which time temporary and impression can be removed from mouth. Be sure to closely follow the progress of polymerisation, as removal is only possible while material is still elastic (Fig. 7).

5. Hardening and finishing

Remove temporary from impression and remove excess material and proximal undercuts. After 6 - 7 min., material is completely cured and hard enough to be trimmed and polished with finishing burs. Contact with oxygen creates an inhibition layer on the temporary, which should be removed using ethyl or isopropyl alcohol.

6. Fastening the temporary

AccuTemp temporaries can be fastened using commercially available temporary dental cements, (eugenol-free). Please note that any residues of eugenol containing cements must be completely eliminated after removal of the temporary from the mouth, as they may interfere with the setting process if composite-type cements are used for subsequent attachment.

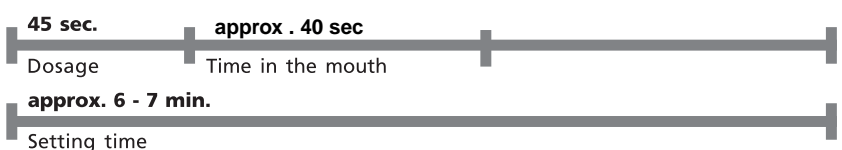
7. Repairing and making minor corrections

Repairs or reinforcement can be performed by means of commercially available product. Polymerisation is effected by light curing, using a hand lamp. Thoroughly clean and dry temporary. Roughen area to be treated and be sure to remove any residual dust from grinding. Apply **bond** evenly using **brush** and distribute with circular movements. Use air syringe to spread **bond** layer evenly; let dry for 1 min. Apply and expose all treated areas to UV light for at least 40 sec. Finish curing process by exposing all areas to light for additional 30 sec. Repaired areas can then be trimmed and polished.

Important hints

- To ensure a homogeneous mixing: Prior to insert the mixing cannula, **always** eject a small amount of material to ensure extruding **equal amounts** of base and catalyst **from both orifices** (Fig. 3).
- Some ingredients of **AccuTemp** may cause allergic reactions of sensitive patients. If such reactions are experienced, discontinue the use of the product.
- Avoid contact with skin and eyes. In the event of accidental contact, rinse with plenty of running water, and consult an specialist if necessary.

For use by trained specialists.



Made in
Germany